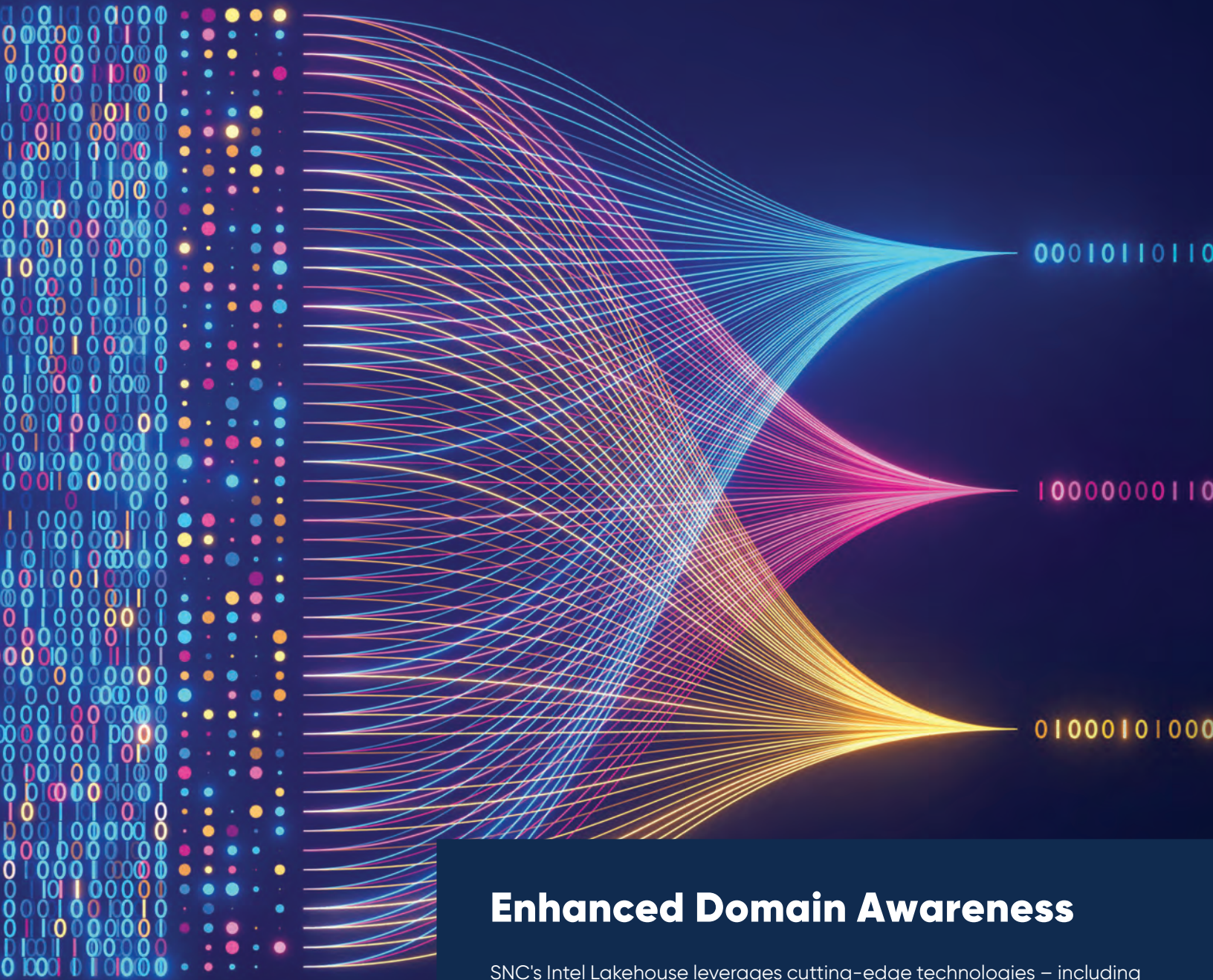




# Intel Lakehouse



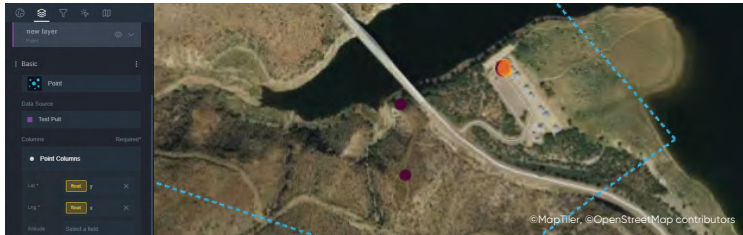
## Enhanced Domain Awareness

SNC's Intel Lakehouse leverages cutting-edge technologies – including our *Vindlér*® LEO RF satellite constellation, commercially available data lakes and advanced RF and EW sensors – to host data at all levels. We enhance this with an AI/ML layer for data fusion, analytics and Tip & Cue capabilities. This Intel Lakehouse integrates seamlessly with *TRAX Edge*™ software, providing informed decision making and predictive insights for any platform, ground station or warfighter.



SNC's Intel Lakehouse enables analysts, operators and decision makers to enhance their situational awareness and discover previously unknown links through the use of advanced algorithms or near real-time, global and persistent data stores.

## ANALYTICS TOOLSETS



### Analytic Workbench Environment

Performs robust scalable elastic compute analytics against the Intel Lakehouse leveraging 30+ analytic libraries



### Analytical & Data Query Toolset

Performs real-time and forensic queries across geospatial, temporal & textural indexes. Open Geospatial Consortium (OGC) standards such as Web Feature Service (WFS) and Web Map Service (WMS) compliant services endpoints are provided

## DATA SERVICE MODELS

We offer access to the Intel Lakehouse across multiple pillars. These pillars enable the end user to perform geospatial analysis, data science tasks through a modern cloud infrastructure.

## FEATURES



### Data Fusion

Integrates data sources across all domains into a single platform



### Enhanced Analytics

The AI/ML layer automates pattern analysis, correlations & insights



### Predictive Insights

Tip & Cue capabilities allow for predictive insights with greater accuracy



### Enhances Situational Awareness

Delivers faster, more accurate insights for targeting, ISR & threat assessments



### Critical Enabler for JADC2 & All-Domain Ops

Supports decision superiority across land, air, sea, cyber & space



### Drives Demand for Advanced Tech

Requires AI/ML, sensor integration, data fusion platforms & edge compute capabilities



### Force Multiplier in Modern Conflict

Transforms siloed intelligence into real-time, actionable information for mission success

## ADVANCED EDGE ANALYTICS

- Multi-modal global intelligence to the Edge
- Information automation for IW
- Digital data fusion & analytics
- Tactical Edge compute nodes
- Space-based compute
- Near real-time RF collection
- Batch data delivery
- Bulk API streaming



775.331.0222

444 Salomon Circle | Sparks, NV 89434

mst@sncorp.com | sncorp.com

DATA CONTAINED WITHIN THIS DOCUMENT ARE SUBJECT TO CHANGE AT ANY TIME AT SNC'S DISCRETION. | SNC is a trademark of Sierra Nevada Company.  
© 2025 Sierra Nevada Company LLC. | WARNING – Exports, sales, and offerings of the products and technologies discussed herein are subject to U.S. Government approval.



9/25/2025